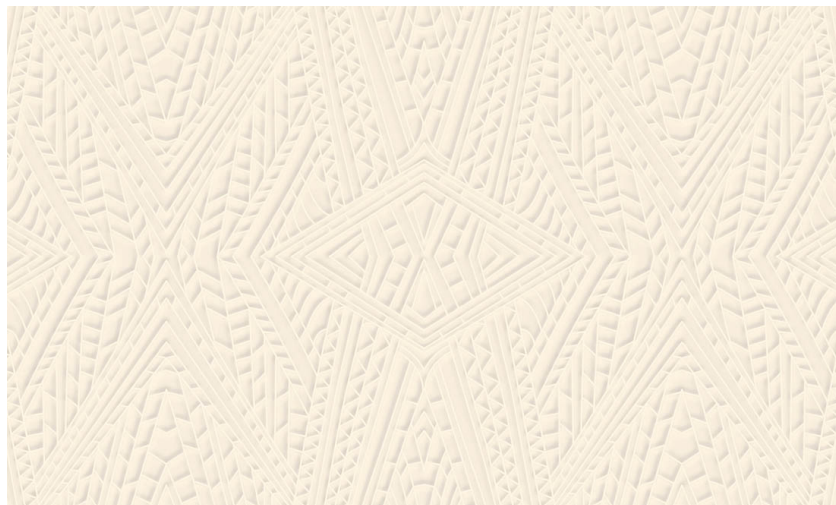


Care and maintenance

Collection	Moood Wallcovering Extinct Animals
Pattern	Dwarf Rhino
Reference	MO2081
Composition	3D textile wallcovering on non-woven backing
Description	3D wallcovering with a soft suede look, based on the unique structure of the ancient skin of the Dwarf Rhino
Remark	Stain and water repellent, positive acoustic effect



During installation:



Carefully dab off any adhesive stains immediately (before the adhesive has dried) with a moist, lint-free, clean white cloth. Do this after installation of each drop.

Maintenance:

First try to apply in an inconspicuous place. Try to remove any stains immediately, before the stain can dry out, by dabbing off the surface with a moist, lint-free, clean white cloth. Only use clear water, no soap.

Avoid excessive rubbing of the surface. Avoid excessive soaking of the surface.

Dust can be wiped off with a damp, lint-free, clean cloth or a brush with soft bristles, or can be lightly vacuumed with a soft bristle attachment to avoid damaging the surface.

Arte can not be held responsible if damage is caused to the product during the cleaning process.