

ARTE®

wallcoverings for the ultimate in refinement

www.arte-international.com

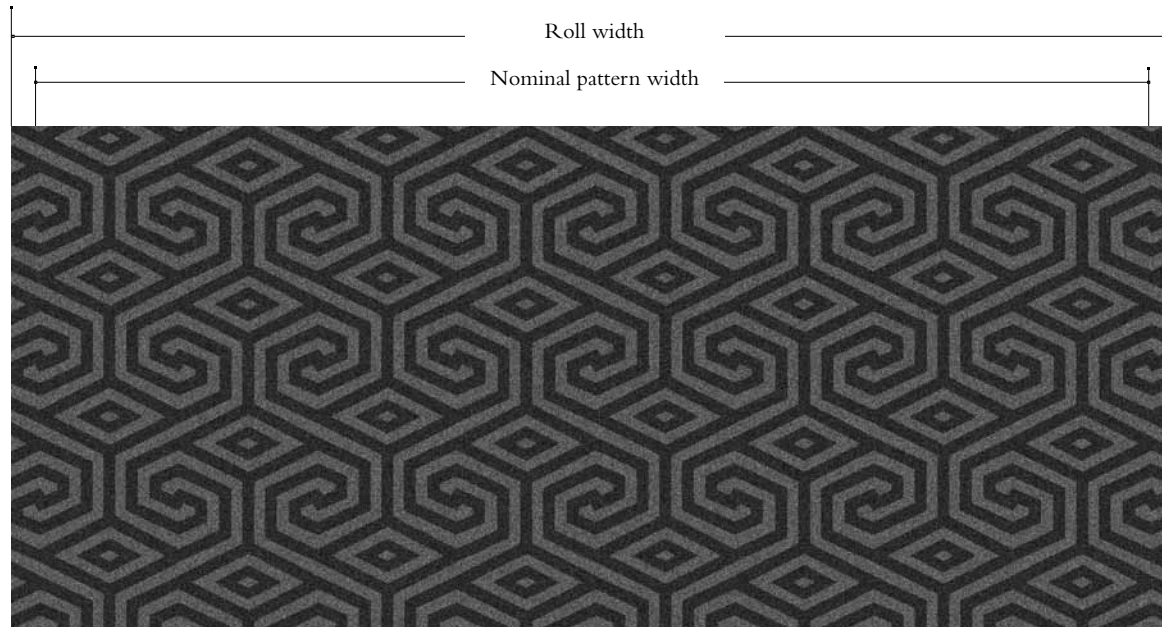
COLLECTION **SIENNA**

LUXURIOUS 54" VINYL WALLCOVERINGS FOR THE CONTRACT MARKET

Pattern
References

SAPPHIRE MAZE
47080 - 47087

		U.S. Units	Metric Units
Total weight		20 oz. PLY	620 g PLM
		13.3 oz. PSY	452 g m ²
Roll width		53/55 in.	135/140 cm
Nominal pattern width		52.0 in.	132 cm
Gauge (average)		0.025 in.	0.635 mm
Fabric		Non-woven	
Repeat	horizontal	13 in.	33.02 cm
	vertical	6 in.	15.24 cm
Hanging instructions		Non-reverse – Straight match	

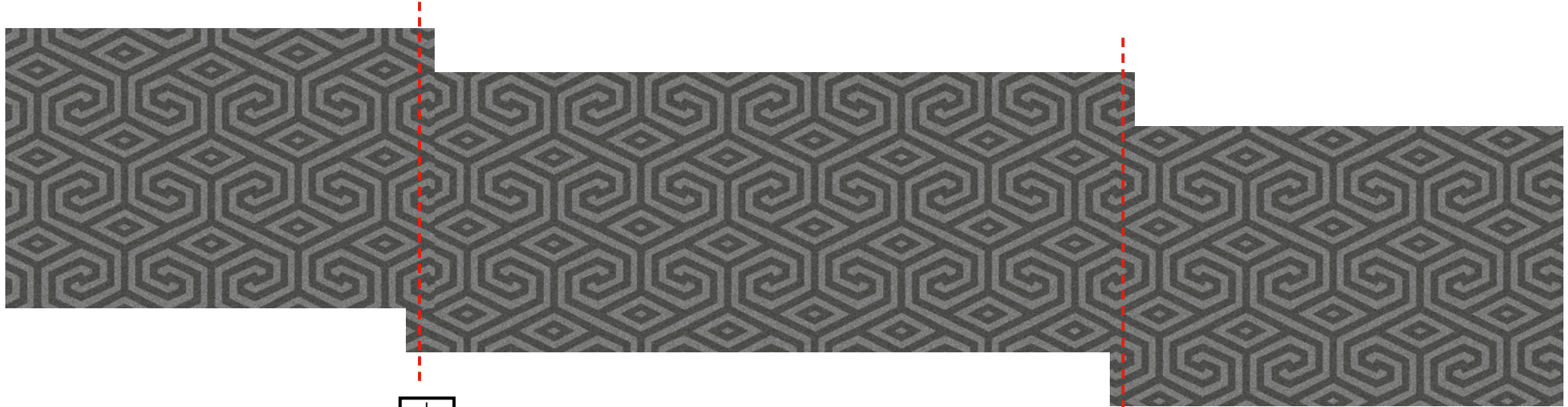


FACT SHEET

COLLECTION SIENNA

Pattern
References

SAPPHIRE MAZE
47080 - 47087



DOUBLE CUT



DOUBLE CUT

GENERAL SPECIFICATIONS

IMPORTANT: read the hanging instructions before starting the installation.

EU CLASSIFICATION

in accordance with EN 13501-1: 2007 and prEN 15102: 2004

Fire Behavior B
Smoke Production s2
Flame Droplets d0

US CLASSIFICATION

Tensile (minimum): 50 x 50 lbf 222 x 222 N
Tear (minimum): 25 x 25
ASTM F-793 : Category V Type II
WA Spec: W 101 - 2011 Type II

Fire Testing:

NFPA 101® Life Safety Code®

NFPA 255 (UL723, CAN S102M) Tunnel Test¹

- Class A Rating

NFPA 286 Corner Burn Test²

- Meets requirements for Flame Spread, Smoke Developed and Flashover.

1. When tested on GRC board with A-848-B adhesive

2. When tested on 5/8" Type X gypsum board with A-848-B adhesive

SAPPHIRE MAZE # 47084 - # 47085 - # 47086 - # 47087

These decorative metallic wallcoverings should only be cleaned with mild ingredients such as soap, detergent and water. Stronger, more alkaline household cleaners and/or excessive scrubbing, have the potential to damage the surface of the wallcovering.

Notes:

- "Roll Width" is the trim width on the specification and represents the width of the wallcovering that will be received by the customer.

- "Gauge" is the product thickness measured after the first pattern colourway is produced.

- "Tensile" and "Tear" results are the minimums required by CCC-W-408A federal specifications.

- "Nominal Pattern Width" is the expected width yield from one drop on the wall.



1408/13

Product complying with the Marine Equipment Directive (MED)

ARTE®

www.arte-international.com