



DAMAS

Collection Flamant Suite V - Mystic Impressions

Story behind the collection

For this collection we immersed ourselves in archives and antique books in search of 19th century floral patterns. Flower and leaf patterns were immensely popular back then and they were often used to decorate everyday objects, especially in the higher social circles. This collection is based on two centuries-old patterns which have each been given a radically new reinterpretation. The first pattern is an informally elegant interplay of flowers and leaves, while the second pattern is somewhat statelier. Both prints seem to have been stippled onto a linen structure and combine perfectly with the plain Lin.

Technical specifications

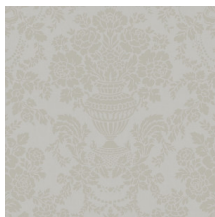
Reference	<u>59100</u>
Product category	Refined
Composition	Wallpaper on non-woven backing
Dimensions	Rolls of 8.50 m x 0.70 m = 6 m ² (9.30 yds x 27.56" = 64 sq. ft.)
Pattern repeat	Straight match 64 cm (25.20")
Adhesive	Arte Clearpro or a good quality dispersion adhesive
How to paste	Paste the wall
Light resistance	Good lightfastness
How to remove	Strippable
Fire retardant EU	B-s1, d0
Fire retardant US	Class A
Maintenance	Extra-washable
IMO Certified	



Colourways (6)



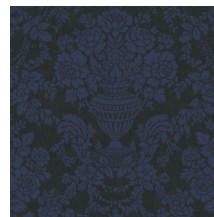
59100



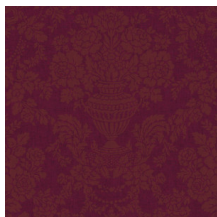
59101



59102



59103



59104



59105

More info? [Click here](#)

Order samples, calculate quantities, view instructional videos, download technical information and more:
www.arte-international.com



ARTE®

wallcoverings for the ultimate in refinement