

GELOMA

Collection Osmanthus



Story behind the collection

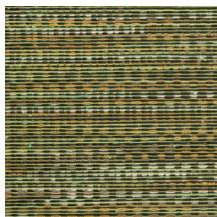
This collection exudes refinement and luxury, not only through the sophisticated embroidery technique but also due to the use of natural materials such as sisal, cotton and hemp. The aesthetic aspect and purity of nature are in perfect balance. The materials, designs and colours in this collection refer to the Far East.

Technical specifications

Reference	<u>54560</u> • Spring Green
Product category	Couture
Composition	Textile wallcovering on non-woven backing
Description	Refined jacquard-woven textile in glossy multicolour threads
Dimensions	Width 137 cm (53.94"), sold by the linear metre/yard
Pattern repeat	Free match 0 cm (0.00")
Adhesive	Arte Clearpro or a good quality dispersion adhesive
How to paste	Paste the wall
Light resistance	Good lightfastness
How to remove	Strippable
Fire retardant EU	Available upon request
Fire retardant US	Class A
Maintenance	Washable



Colourways (5)



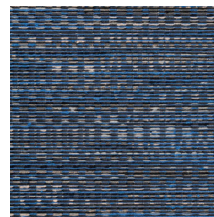
54560



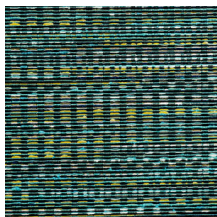
54561



54562



54563



54564

More info? [Click here](#)

Order samples, calculate quantities, view instructional videos, download technical information and more:
www.arte-international.com



ARTE®

wallcoverings for the ultimate in refinement