



# CHASU

Collection Osmanthus

## Story behind the collection

This collection exudes refinement and luxury, not only through the sophisticated embroidery technique but also due to the use of natural materials such as sisal, cotton and hemp. The aesthetic aspect and purity of nature are in perfect balance. The materials, designs and colours in this collection refer to the Far East.

## Technical specifications

|                   |  |
|-------------------|--|
| Reference         | <u>54510</u> • Fresh Gold  |
| Product category  | Couture  |
| Composition       | Natural wallcovering on non-woven backing  |
| Description       | Abstract herringbone pattern embroidered onto a sisal background using shiny textile threads |
| Dimensions        | Rolls of 3.20 m x 0.86 m = 2.75 m <sup>2</sup> (3.50 yds x 33.86" = 29.60 sq.ft.)            |
| Pattern repeat    | Straight match 80 cm (31.50")  |
| Adhesive          | Arte Clearpro or a good quality dispersion adhesive  |
| How to paste      | Moisten the product, paste the wall and paste the wallcovering                               |
| Light resistance  | Moderate lightfastness   |
| How to remove     | Strippable   |
| Fire retardant EU | B-s1, d0   |
| Fire retardant US | Class A  |
| Maintenance       | Spongeable during hanging (dab away damp glue)   |



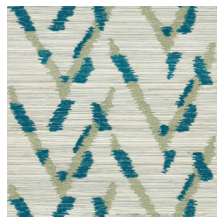
## Colourways (4)



54510



54511



54512



54513

## View



More info? [Click here](#)

Order samples, calculate quantities, view instructional videos, download technical information and more:  
[www.arte-international.com](http://www.arte-international.com)



ARTE®

wallcoverings for the ultimate in refinement