



TINTO

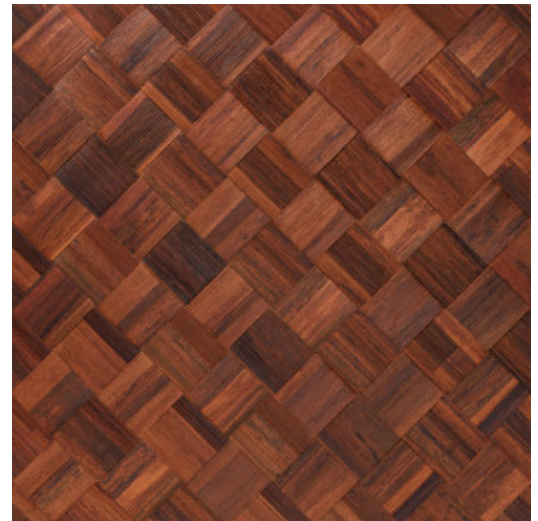
Collection Les Forêts

Story behind the collection

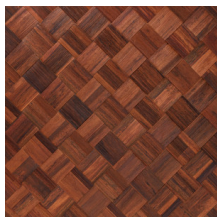
As the name of the collection suggests, Les Forêts is an ode to the mysterious atmosphere of a dense forest. Natural materials such as bark, raffia and wood, combined with forest patterns, instantly whisk you off on an imaginary walk through the woods.

Technical specifications

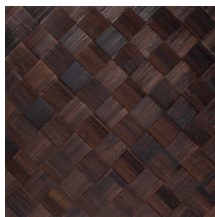
| | |
|-------------------|--|
| Reference | <u>48000</u> • Cinnamon |
| Product category | Couture |
| Composition | Natural wallcovering on non-woven backing |
| Description | Tile-shaped wallcoverings made from the bark of the banana tree and woven manually into a checkerboard pattern |
| Dimensions | Tiles of 50 cm x 50 cm (19.69" x 19.69") |
| Pattern repeat | Straight match 50 cm (19.69") |
| Adhesive | Arte Clearpro Extreme or an equivalent, easily workable mounting adhesive |
| How to paste | Paste the wallcovering |
| Light resistance | Moderate lightfastness |
| How to remove | Peelable |
| Fire retardant EU | D-s1, d0 |
| Maintenance | Spongeable during hanging (dab away damp glue) |



Colourways (3)



48000

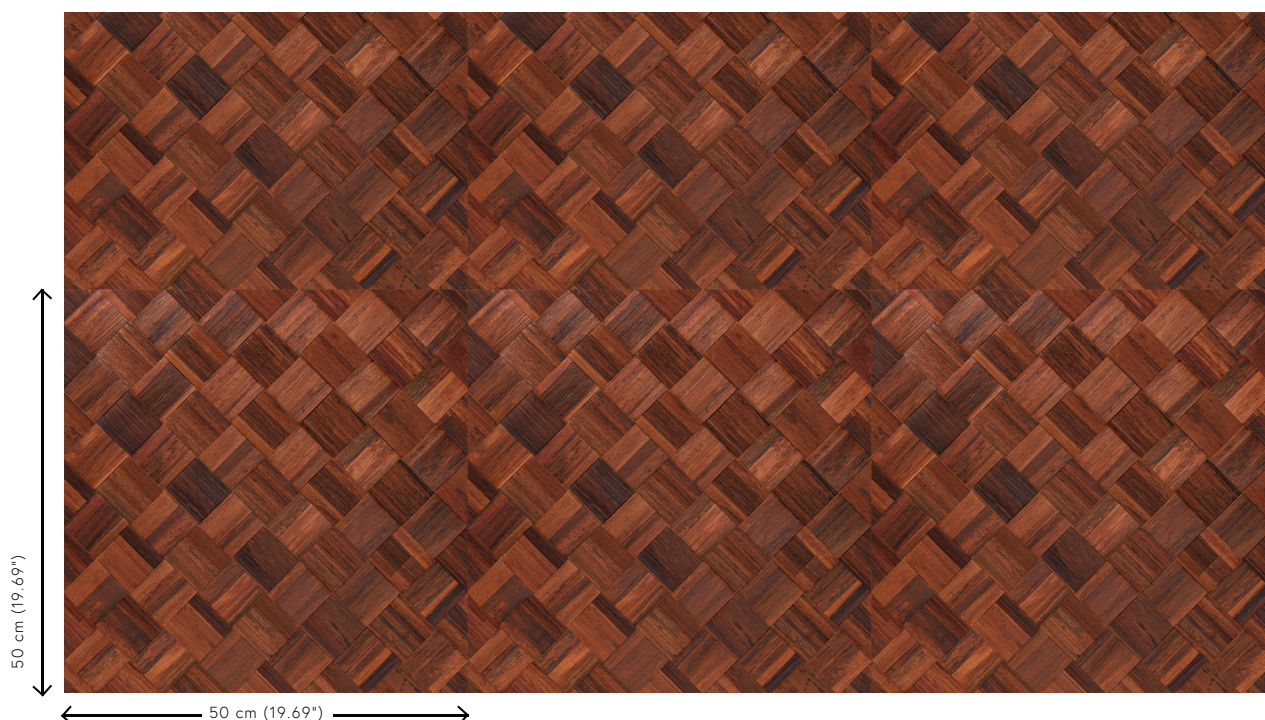


48001



48002

View



More info? [Click here](#)

Order samples, calculate quantities, view instructional videos, download technical information and more:
www.arte-international.com



ARTE®

wallcoverings for the ultimate in refinement