



# MANOIR

## Collection Objet

### Story behind the collection

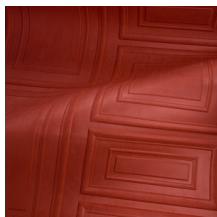
Decorative mouldings have been adorning walls and ceilings in all shapes and styles for centuries. Examples include skirting boards, cornices, wainscoting or wall panels in stately mansions, imposing palaces or listed buildings. These form the source of inspiration for the Objet collection. Not only are these decorative wallcoverings easy to install, but they also add colour, texture and relief. They are finished in a soft suede look for an extra tactile result. As these wallcoverings are 3D, they also have a positive impact on the acoustics in a room.

### Technical specifications

Reference	<u>44020</u> • Terra
Product category	Couture
Composition	3D textile wallcovering on non-woven backing
Description	Wall panels inspired by decorative mouldings finished in a soft suede look
Dimensions	Panels 298 cm x 120 cm = 3,58 m <sup>2</sup> (117.32" x 47.24" = 38.53 sq.ft.)
Remark	Stain and water repellent, positive acoustic effect, the pattern is repeatable, allowing several panoramiques to be joined together.
Adhesive	Arte Clearpro or a good quality dispersion adhesive
How to paste	Paste the wall
Light resistance	Good lightfastness
How to remove	Strippable
Fire retardant EU	D-s1, d0
Fire retardant US	Class A
Maintenance	Spongeable during hanging (dab away damp glue)



## Colourways (5)



44020



44021



44022

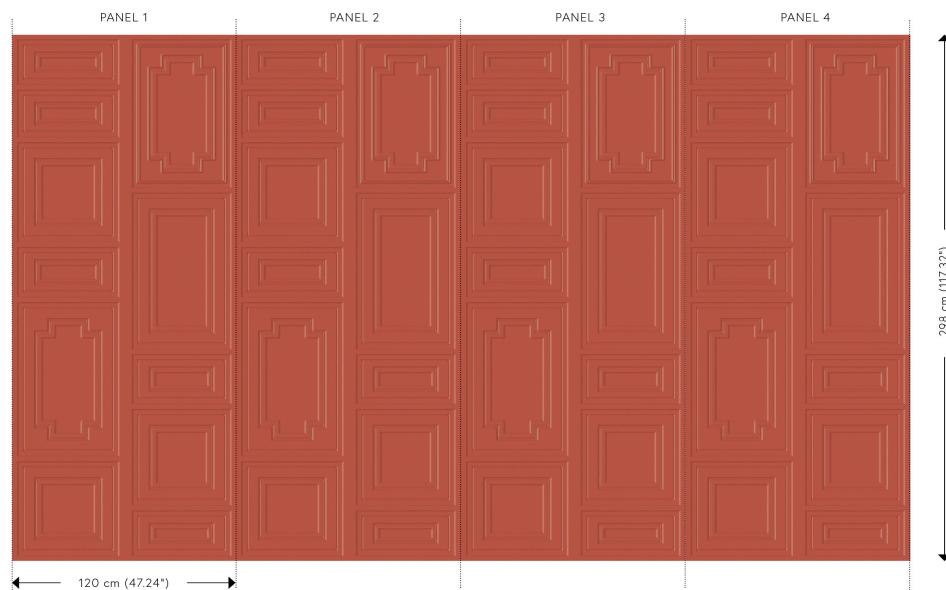


44023



44024

## View



More info? [Click here](#)

Order samples, calculate quantities, view instructional videos, download technical information and more:  
[www.arte-international.com](http://www.arte-international.com)



ARTE®

wallcoverings for the ultimate in refinement