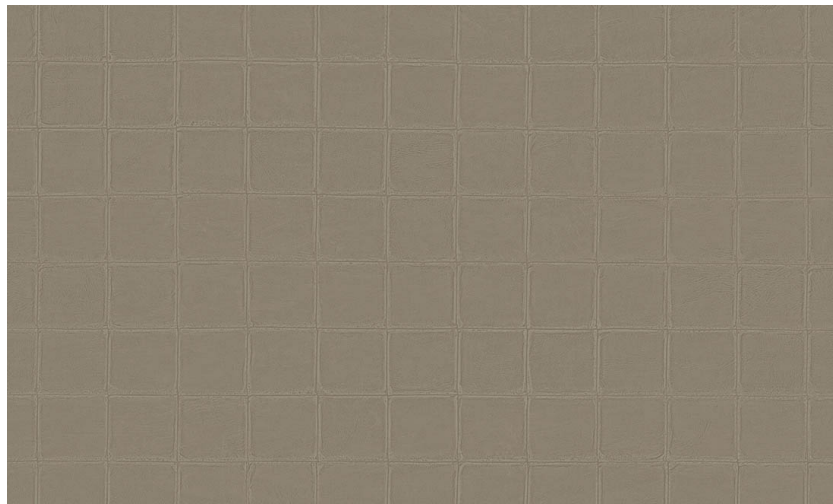


Care and maintenance

Collection	Atelier
Pattern	Alma
Référence	21021
Composition	Vinyl wallpaper on non-woven backing
Description	Extra-heavy vinyl wallpaper with the authentic look of hand-stitched leather



During installation:

Carefully wash off any adhesive stains immediately (before the adhesive has dried) with clean water and a soft sponge. Do this after installation of each drop.

Maintenance:

First try to apply in an inconspicuous place. Try to remove any stains immediately, before the stain can dry out, by washing off the surface with clear water and a soft sponge. For more stubborn stains, a PH-neutral soap solution could be added to the water. Always wipe off with warm, clean water.

Never use cleaning agents based on solvents.

Dry with a lint-free, clean cloth.

Dust can be wiped off with a damp, lint-free, clean cloth or a brush with soft bristles, or can be lightly vacuumed with a soft bristle attachment to avoid damaging the surface.

Arte can not be held responsible if damage is caused to the product during the cleaning process.